



We Manufacture. We Deliver.

[HOME](#)

[PRODUCTS](#)

[BECOME A DISTRIBUTOR](#)

[GET CREDIT](#)

[QUOTE](#)

[CONTACT US](#)

GreenSolutions(TM) GS 50 TRM is a machine stitched Heavy-Duty Polypropylene Turf Reinforcement Mat utilized for protection of shorelines, channels, and extreme slopes. GS 50 is comprised of an evenly distributed matrix of U.V. stabilized polypropylene/synthetic fibers that are stitch-bonded between two layers of biaxially oriented Heavy-Duty polypropylene netting. The fiber and netting components are stitched on 1.5" centers using a polypropylene thread. All components used to manufacture GS 50 are non-biodegradable and are resistant to U.V. and chemical degradation.



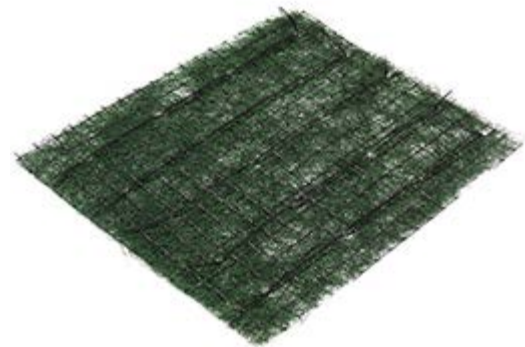
**Quantity**  
16 rolls per bundle  
352 rolls per truckload

**Roll Size**  
8' x 112.5' (100sy)



**GS 50 Turf Reinforcement Mat**

<b>Matrix:</b>	100% Polypropylene Fibers
<b>Width:</b>	8 ft (2.44 m)
<b>Length:</b>	112.5 ft (34.29 m)
<b>Unit Area:</b>	10.0 oz/yd <sup>2</sup> (340 g/m <sup>2</sup> )
<b>Thickness:</b>	0.40 in (10.1 mm)
<b>Functional Longevity:</b>	Permanent
<b>Top Netting:</b>	Medium Weight
<b>Bottom Netting:</b>	Medium Weight
<b>Stitching:</b>	Permanent on 1.5" Centers



[Product Data Sheet](#) | [Install Guidelines](#) | [Blanket Selection Guidelines](#) | [General Staple Pattern](#)

Quantity	Application	Functional Longevity	Anchor Recommendations
16 Rolls / Pallet	1H: 1V or Greater	Permanent	3 Anchor/yd <sup>2</sup> 1.2 Anchors/m <sup>2</sup>

[HOME](#) | [PRODUCTS](#) | [BECOME A DISTRIBUTOR](#) | [CONTACT US](#) | [GET CREDIT](#) | [GET QUOTE](#)

© 2009 greensolutions.us