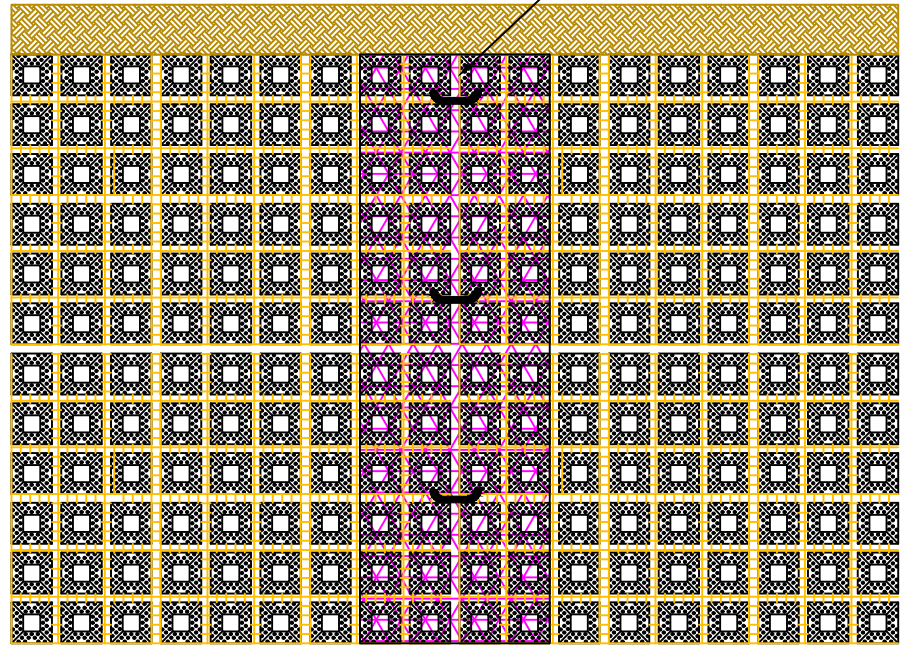
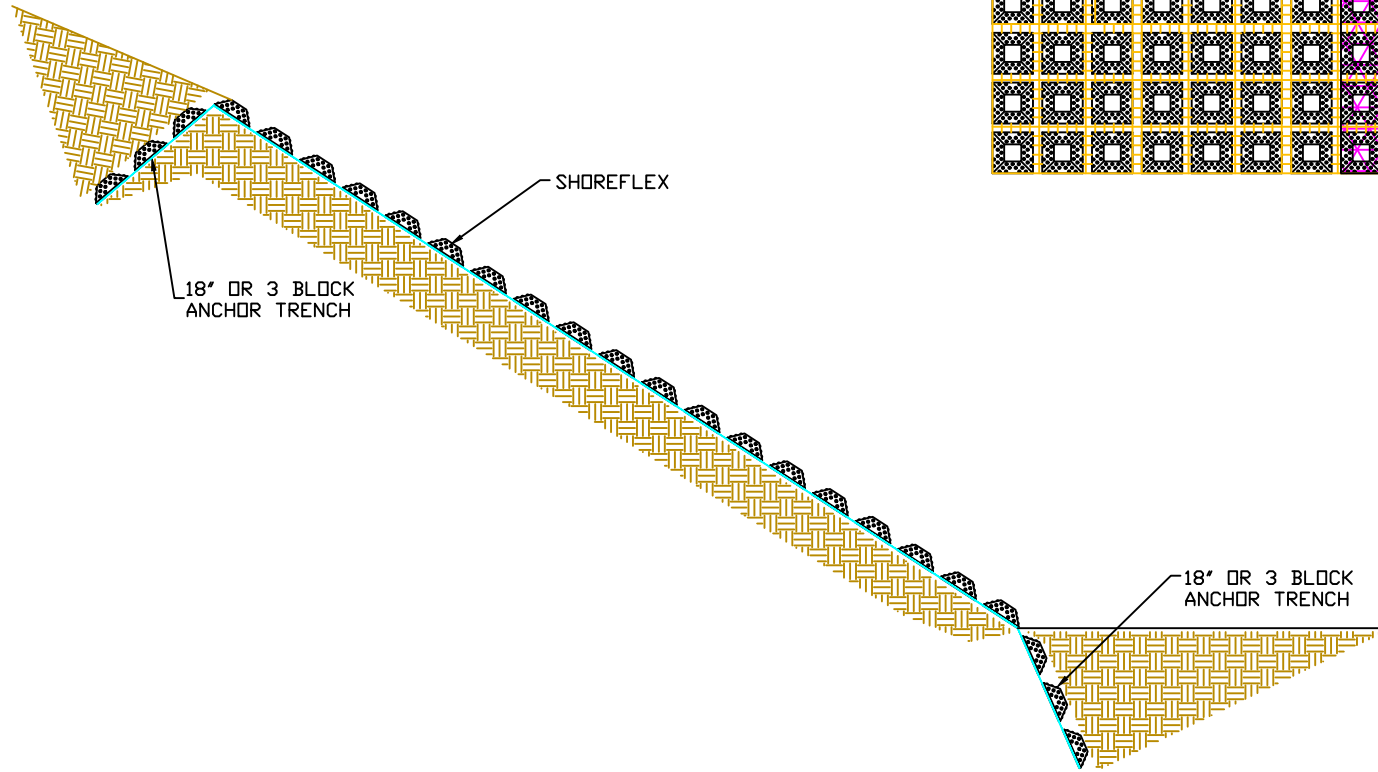


PARALLEL SEAMS HAVE A MINIMUM OF 2' WIDE UNDERLAYMENT PLACED EVENLY UNDER BOTH MATS & ANCHORS INSTALLED EVERY 8'.



Drawing N.T.S.



Project:	
Customer:	
Detail Title:	ShoreFlex Slope Protection

DISCLAIMER
 THE INFORMATION CONTAINED HEREIN HAS BEEN COMPILED BY SHORETEC® LLC AND TO THE BEST OF OUR KNOWLEDGE, ACCURATELY REPRESENTS THE SHOREFLEX® PRODUCT USE IN THE APPLICATIONS WHICH ARE ILLUSTRATED. FINAL DETERMINATION OF THE SUITABILITY FOR THE USE CONTEMPLATED AND ITS MANNER OF USE ARE THE SOLE RESPONSIBILITY OF THE USER. STRUCTURAL DESIGN AND ANALYSIS SHALL BE PERFORMED BY THE QUALIFIED ENGINEER.